

**ISSUE/REVISION HISTORY**

I/R	DATE	DESCRIPTION
-	Jan 19	Planning Submission

**PROJECT NUMBER**

60568520

**SHEET TITLE**

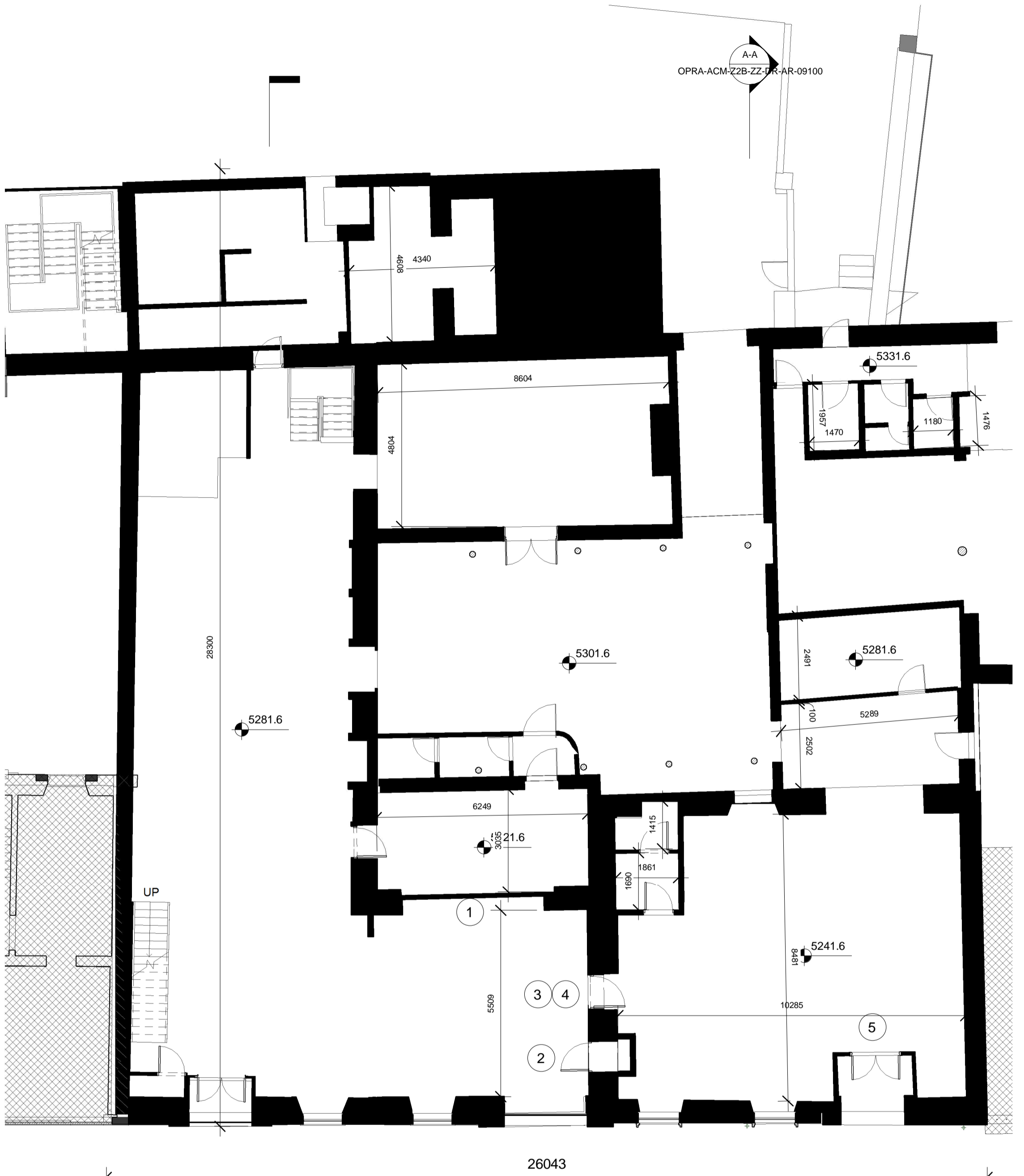
Parcel 2B - Existing / Demolition  
Ground Floor Plan

SCALE 1 : 100@A1

SHEET NUMBER REV

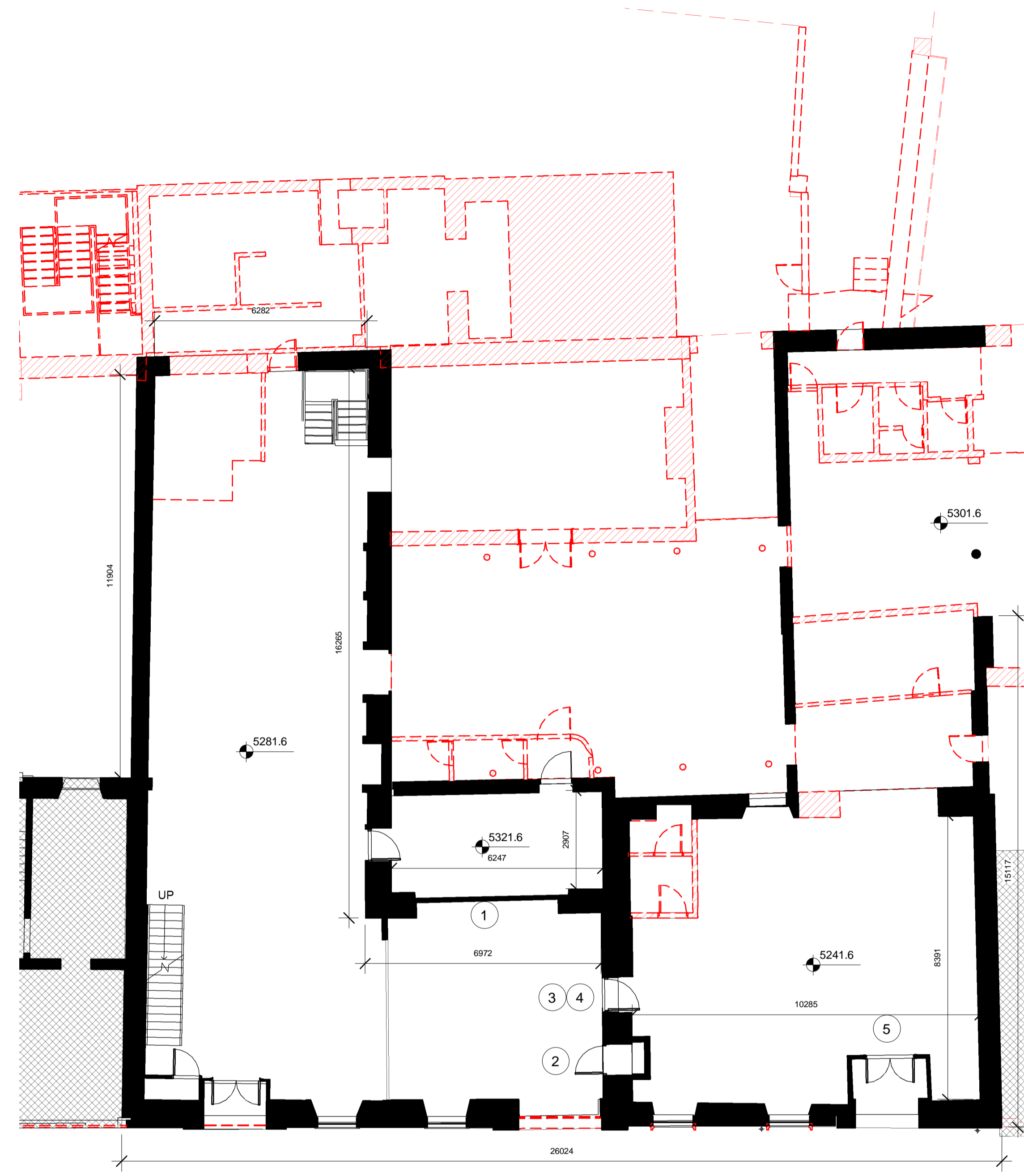
OPRA-ACM-Z2B-GF-DR-AR-09000

This drawing has been prepared for the use of AECOM's client. It may not be used, modified, reproduced or relied upon by third parties, except as agreed by AECOM or as required by law. AECOM accepts no responsibility, and denies any liability whatsoever, to any party that uses or relies on this drawing without AECOM's express written consent. Do not scale this document. All measurements must be obtained from the stated dimensions.



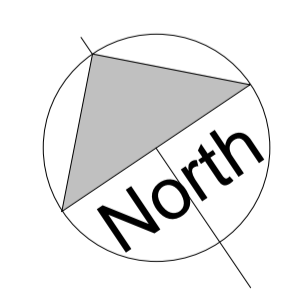
ELLEN STREET

**1 Existing Ground Floor Plan**  
SCALE: 1 : 100



ELLEN STREET

**2 Demolition Ground Floor Plan**  
SCALE: 1 : 100



**Significant Items**

- 1 Historic Glazing
- 2 Safe
- 3 Timber Screen
- 4 Paneled Door
- 5 Flag Stone Floor

**Key**

- Existing Construction
- Demolished

ISO A1 594mm x 841mm  
Approved: Approver  
Checked: Checker  
Project Management Initials: Designer  
Last Plotted: 25/01/2019 15:22:52  
Filename: C:\Users\adrian.wheeler\Documents\OPRA-ACM-Z2B-ZZ-M3-AR-0001\_sdr\iang1971.rvt  
Printed on: Recycled Content Paper